

Card Sensor operation



Remark: please do as the step when you register ID card.
Especially pay attention to the switch position and power condition.

Factory standard setting: with 2pcs already registered ID card.
One is control card, which is used for user card registration,
cannot unlock the door. Another one is user card, could unlock the door.
If you need add more user card, use this registered control card to register blank card.
The method is as follow:

Card sensor operation

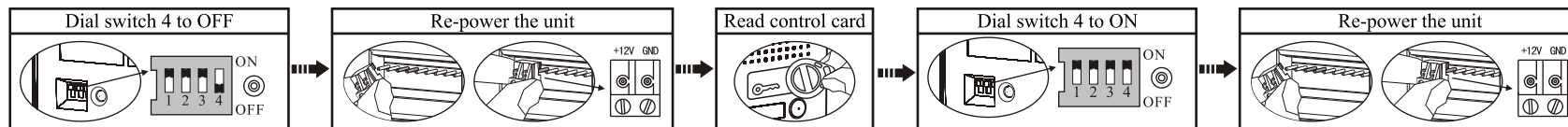
Dial the dialing switch on the back of unit, to select the mode you need.

1.1 Control card registration

Dial switch 4 to OFF, (others keep ON). Re-power the unit, the red LED flashes, means it is under control card registration mode.

Read the blank card, succeed with a long chime, green LED light on. Failed or this card has already registered, with 3 short chime, green LED flashes 3 times. (support max. 3pcs control card)

Exit this mode: dial switch 4 to ON, re-power the unit, then red LED keeps light.



1.2 User card registration

Dial all switch to ON, red LED keeps light. Read the registered control card, green LED light on, after a long chime, red LED turns to flash. Means it is under user card registration mode.

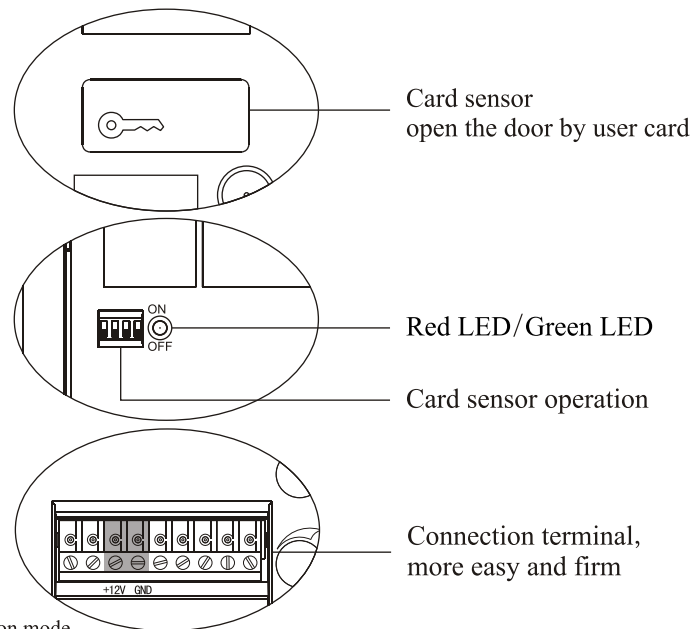
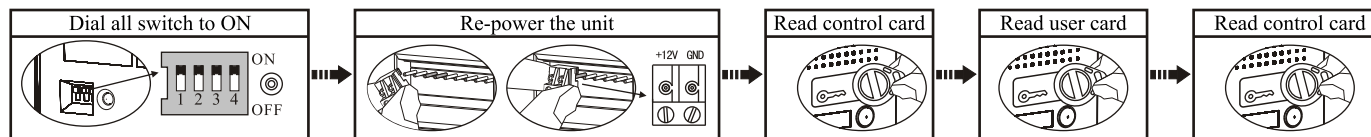
Read the blank card, succeed if green LED light on, after a long chime, red LED turns to flash. Failed or this card has already registered, with 3 short chime, green LED flashes 3 times.

(support max. 256pcs user card)

Exit: read the previous control card, with 2 short chime.

Or: 2 short chime auto exit after 30s if no operation

The user card can only unlock the door after exit registration mode.

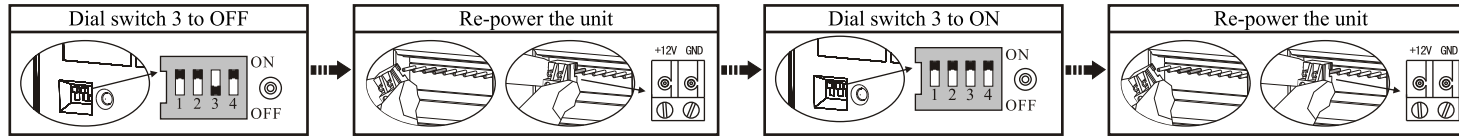


Card Sensor operation

1.3 Control card delete

Dial switch 3 to OFF (others keep ON). Re-power the unit, after a long chime, green LED flashes once, all of control cards have been deleted.

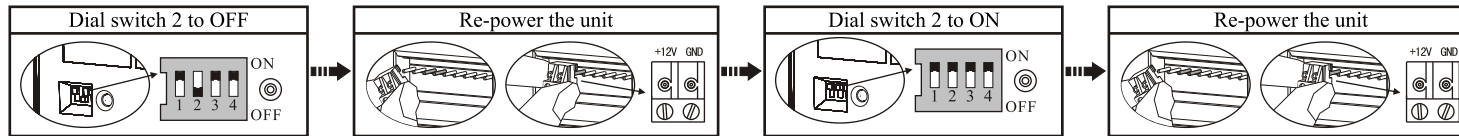
Exit: dial switch 3 to ON, re-power the unit, then red LED keeps light.



1.4 User card delete

Dial switch 2 to OFF (others keep ON). Re-power the unit, after a long chime, green LED flashes once, all of user cards have been deleted.

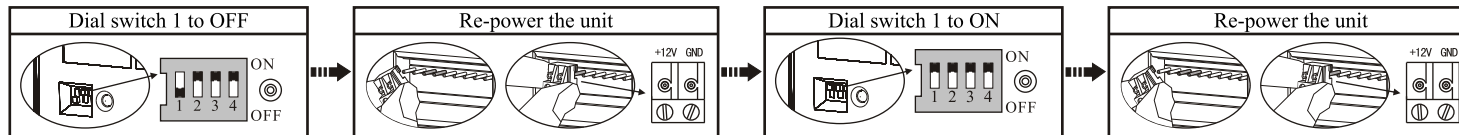
Exit: dial switch 2 to ON, re-power the unit, then red LED keeps light.



1.5 All card delete (incl. control and user card)

Dial switch 1 to OFF (others keep ON). Re-power the unit, after a long chime, green LED flashes once, all of cards have been deleted.

Exit: dial switch 1 to ON, re-power the unit, then red LED keeps light.



1.6 Unlock by ID card

Read user card on the card sensor, succeed with long chime, green LED light on.

The pulse time for unlock is 3s. After unlock, red LED keeps light. Failed with 3 chime, green LED flashes 3 times.